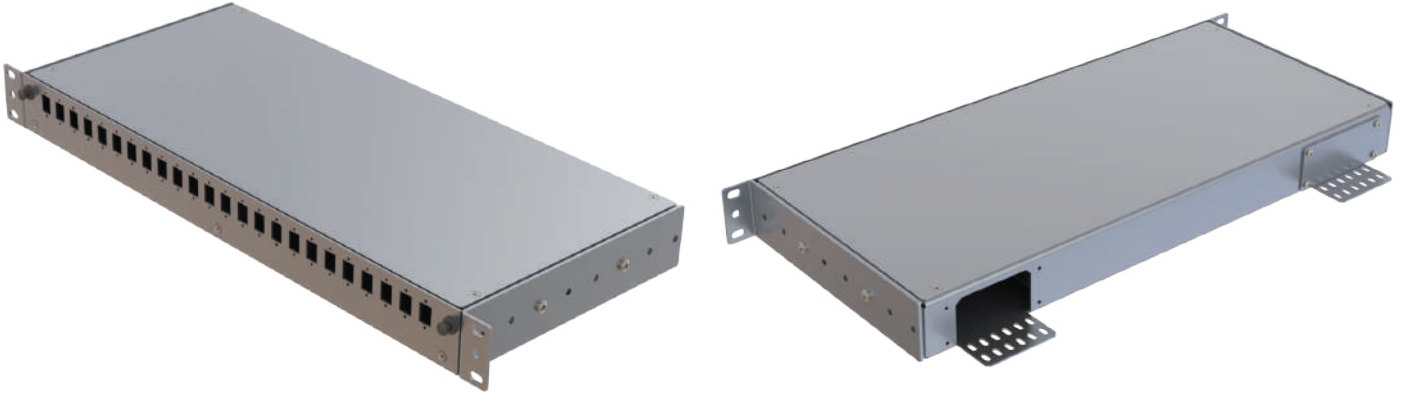


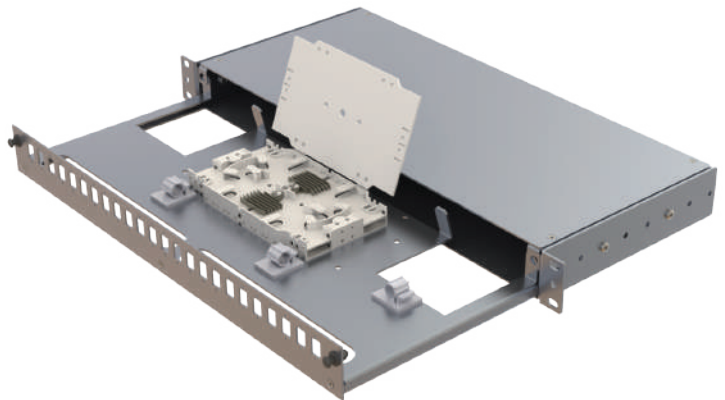
1U ATP Series Front Patch Panels

ATP series panels are used to terminate and distribute optical fiber cables with high capacity, from 24 to 48 fibers. ATP panels are convenient equipment to organize and connect the fiber optic links, and are designed to be used in telecommunication networks, central offices, fiber optic infrastructure and on-premises fiber networks. Our fiber optic panels follow the typical rack mount standards, and they come with different kinds of optional fiber optic adapters, ports and pre-installed inner trays, accessories, and different types of pigtails



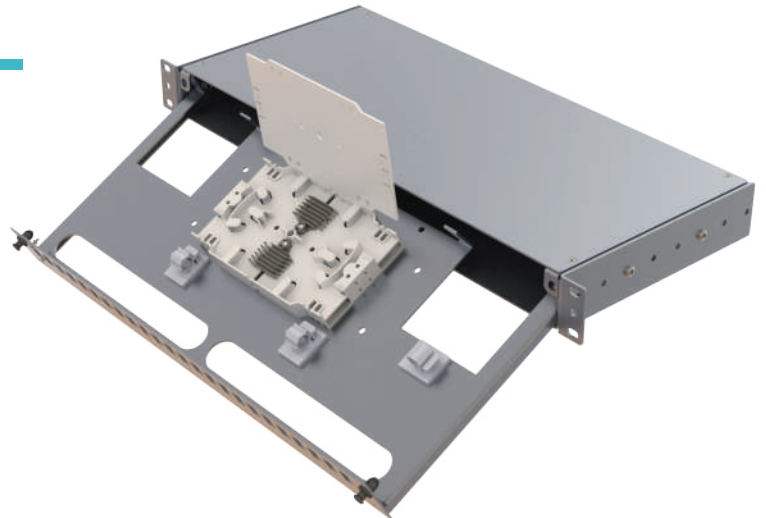
Technical Data

Material	Anodised aluminium
Colour	Aluminium silver
Capacity	48 fibers with LC-DX 24 fibers with SC-SX / LSH(E2000)-SX
2011/65/EC	(RoHS) fully compliant
Cassette	24F/Cassette with fusion splice holders
Dimensions	W:482/439 × D:230/200 × H:44 mm

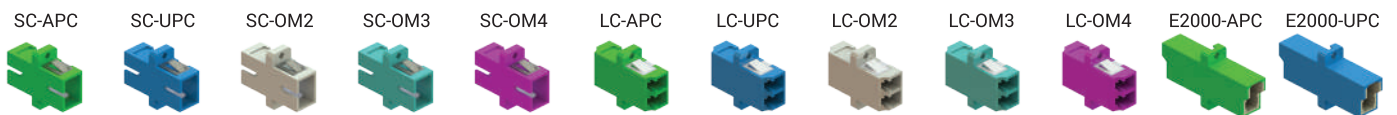


Characteristics

- Easy and time-saving installation
- Standard 1U 19" size
- Light weight aluminium construction
- Drawer tilt function for easy access
- Up to 48 fibers per 1U
- 2 perforated plates integrated in the rear of the housing
- Loose tube storage area in bottom of drawer

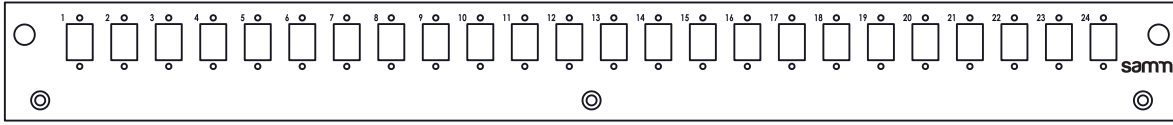


Adapter Types

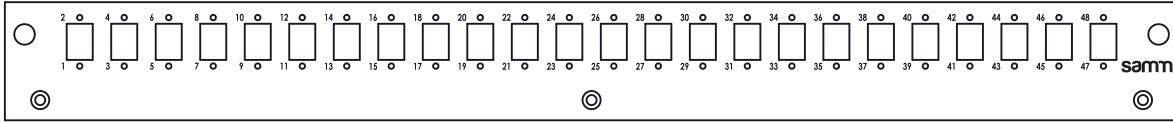


Front Panel Numbering

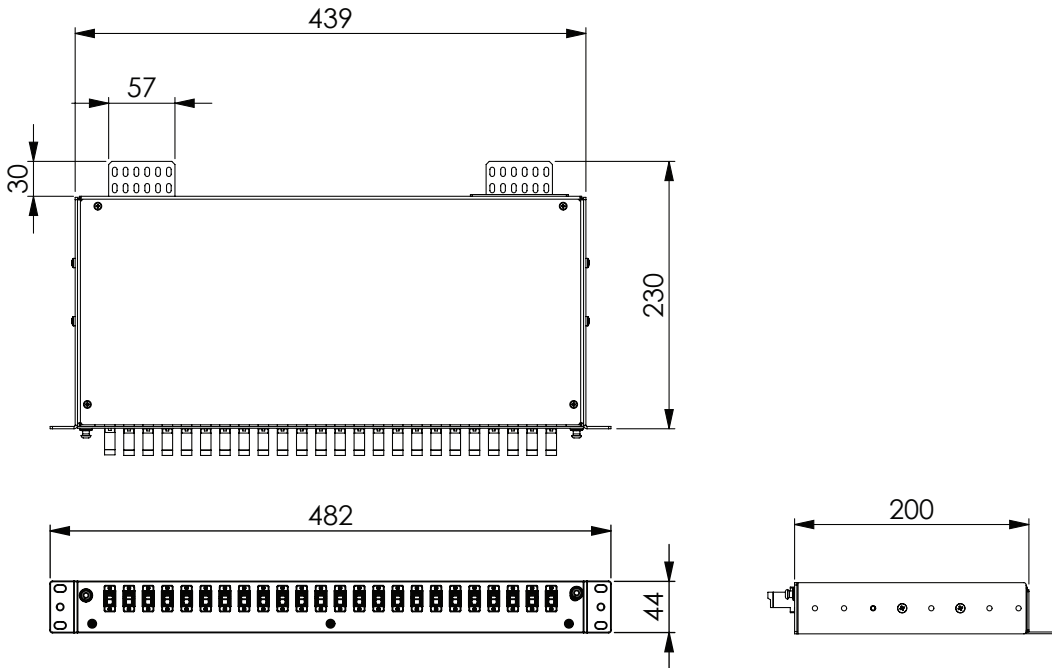
Panel Type P01 For SC and LSH(E2000)



Panel Type P02 For LC-DX



Dimensions and Drawings



Panel Contents

Content Details	Empty Panel Partially Loaded	SC/LSH(E2000) Fully Loaded	LC-DX Fully Loaded
Panel BodyCapacity	1 PC	1 PC	1 PC
Sticky Storage and Management Clips	4 PC	4 PC	4 PC
24F Splice Cassettes	2 PC	2 PC	2 PC
Rack Mounting Set	1 SET	1 SET	1 SET
Cable Tie Set	1 SET	1SET	1 SET
Rear Blind Plate for one side closing	1 SET	1 PC	1 PC
Adapters Pre-assembled with screws	NONE	24 PC	24 PC
Fusion Splice Protection Sleeve 45mm	NONE	24 PC	48 PC
Pigtails (Un-assembled)	NONE	24 PC	48 PC

Ordering Codes

Empty Panel Ordering

Product Code	Item Code	Description
YT01415	ATP-1U-P01-NN-NN-SX-NN	Empty panel for SC/LSH(E2000) , cassettes and management clips are pre-assembled and included
YT01416	ATP-1U-P02-NN-NN-DX-NN	Empty panel for LC-DX , cassettes and management clips are pre-assembled and included

SC Type Ordering

Product Code	Item Code	Description
MT 09884	ATP-1U-P01-A2-SC-SX-24	24 × SC Simplex adapters, blue, with 24 × SC/UPC 125/9μ A2 single mode pigtailed. Fully loaded.
MT 09885	ATP-1U-P01-A2-SA-SX-24	24 × SC Simplex adapters, green, with 24 × SC/APC 125/9μ A2 single mode pigtailed. Fully loaded.
MT09886	ATP-1U-P01-M2-SC-SX-24	24 × SC Simplex adapters, beige, with 24 × SC/UPC 125/50μ OM2 multi mode pigtailed. Fully loaded.
MT09887	ATP-1U-P01-M3-SC-SX-24	24 × SC Simplex adapters, aqua , with 24 × SC/UPC 125/50μ OM3 multi mode pigtailed. Fully loaded.
MT 09888	ATP-1U-P01-M4-SC-SX-24	24 × SC Simplex adapters, violet, with 24 × SC/UPC 125/50μ OM4 multi mode pigtailed. Fully loaded.

LC Type Ordering

Product Code	Item Code	Description
MT 09889	ATP-1U-P02-A2-LC-DX-48	24× LC Duplex adapters, blue, with 48 × LC/UPC 125/9μ A2 single mode pigtailed. Fully loaded.
MT09890	ATP-1U-P02-A2-LA-DX-48	24× LC Duplex adapters, green, with 48 × LC/APC 125/9μ A2 single mode pigtailed. Fully loaded.
MT09891	ATP-1U-P02-M2-LC-DX-48	24× LC Duplex adapters, beige, with 48 × LC/UPC 125/50μ OM2 multi mode pigtailed. Fully loaded.
MT09892	ATP-1U-P02-M3-LC-DX-48	24× LC Duplex adapters, aqua, with 48 × LC/UPC 125/50μ OM3 multi mode pigtailed. Fully loaded.
MT 09893	ATP-1U-P02-M4-LC-DX-48	24× LC Duplex adapters, violet, with 48 × LC/UPC 125/50μ OM4 multi mode pigtailed. Fully loaded.

LSH(E2000) Type Ordering

Product Code	Item Code	Description
MT 09894	ATP-1U-P01-A2-E2-SX-24	24 × LSH(E2000) adapters, blue, with 24 × LSH(E2000)/UPC 9/125μ A2 single mode pigtailed. Fully loaded.
MT09895	ATP-1U-P01-A2-EA-SX-24	24 × LSH(E2000) adapters, green, with 24 × LSH(E2000)/APC 125/9μ A2 single mode pigtailed. Fully loaded.