

19" 1U Single Phase Aluminum 6 Schuko Socket 1,8 MT 3x1,5 mm² Cabled UPS Plug Power Distribution Unit (PDU) with Ampermeter

DESIGN & MATERIAL

Plastic Material	Fire Retardant Nylon 6 v0 or v2
Body Material	Aluminum Body
Sockets	6xSchuko Sockets (DIN 49440)
Cable Options	1,5 Mtr / 1,8 Mtr / 2 Mtr / 3 Mtr / 5 Mtr 3x1,5 mm ² / 3x2,5 mm ² / 3x4 mm ² / 3x6 mm ²
Rack Mount	19" 1U Rack Mountable
Contacts	Contacts: Brass
Protection	Ampermeter 16A Circuit Breaker On/Off Switch Surge Protect
Certificate	CE
Warranty	Lifetime (On production based defects)

ELECTRICAL & ENVIROMENTAL

Cable Plug Type Options	UPS(DIN49441) CEE NORM 16A (EN60309) UK 13A (BS1363) IEC 320 (C14&C20)
Max. Output power	4000W (220V)
Nominal Input Voltage	100-240VAC
Max. Total Current Draw	16A
Operable Humidity	% 5-95
Operable Temperature	-5°C to +45°C
Storage Temperature	-25°C to +65°C

Highlights

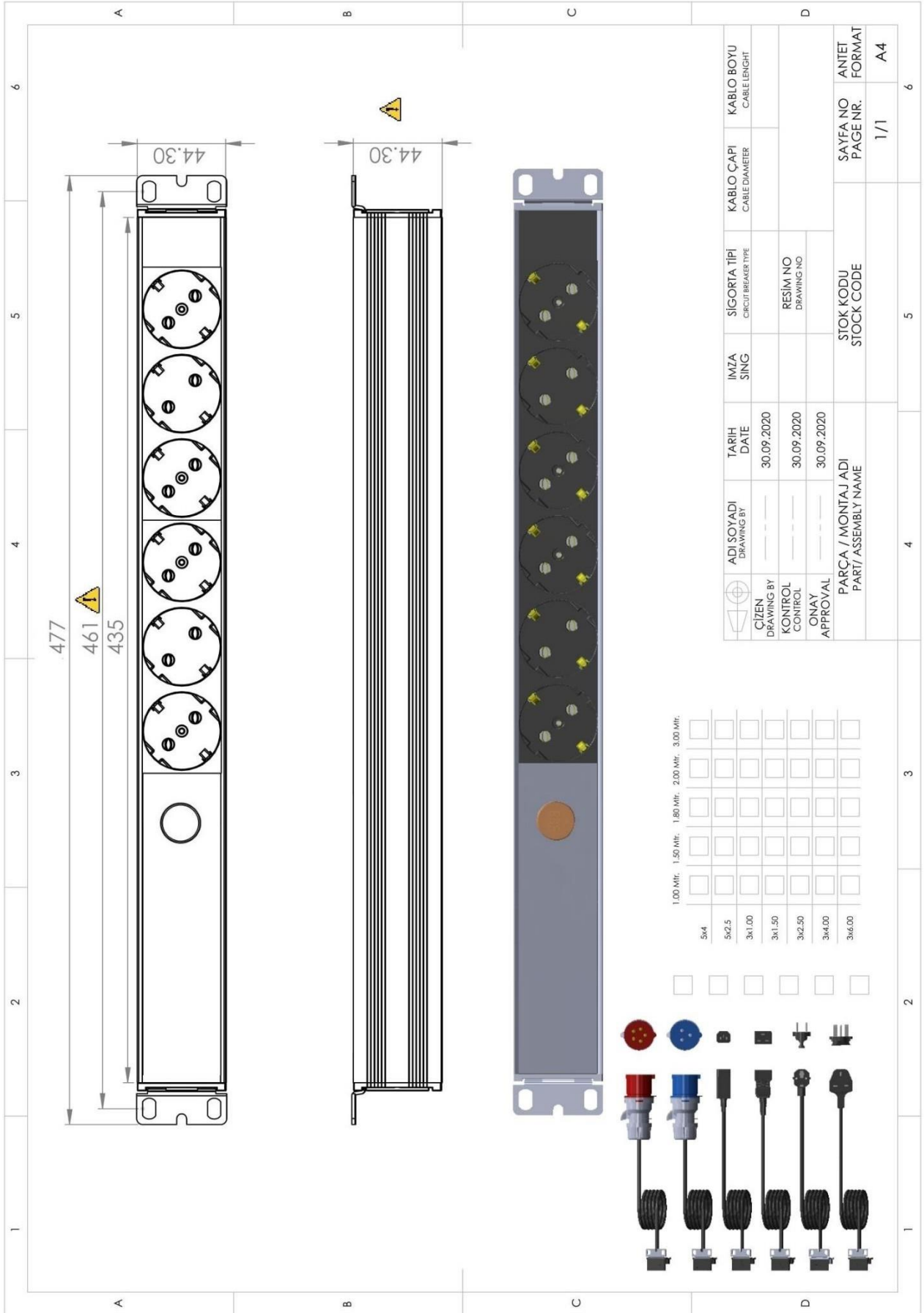
- 19" Rack Mountable
- Rotating Installation Ears
- Aluminum Body
- Fire-retardant plastic material
- Fuse Box designed to prevent accidental shutdowns
- Mounting ears create isolation between rack cabinets and PDU
- Arc flash proof sockets
- 100% Brass socket contacts
- Design Certification

The Package Includes

- PDU
- Screw&Nut Set for installation

Options

- Fixed Plastic Mounting Ear Option
- Cable Length/Plug type on demand
- 3/6/9/12 Way Options
- Voltmeter / Ammeter
- Color Options



ADI SOYADI DRAWING BY	TARİH DATE	İMZA SIGN	SİGORTA TİPİ CIRCUIT BREAKER TYPE	KABLO ÇAPİ CABLE DIAMETER	KABLO BOYU CABLE LENGTH
ÇİZEN DRAWING BY	30.09.2020				
KONTROL CONTROL	30.09.2020		RESİM NO DRAWING NO		
ONAY APPROVAL	30.09.2020				
PARÇA / MONTAJ ADI PART / ASSEMBLY NAME			STOK KODU STOCK CODE	SAYFA NO PAGE NR.	ANİTET FORMAT
				1/1	A4